

FOR SUB-LEASE

20 Hazelton Avenue

AVAILABLE SPACE

Entire Building for Lease
Approximately
3,000 sq. ft

ASKING RENT

Please contact
listing agent

AVAILABLE:

30-90 days

TERM:

To August 31, 2017
Landlord open to
extending term

HIGHLIGHTS:

- Entire Building for lease; 3 Floors + Finished Basement
- Located beside entrance to Yorkville Village
- High quality leaseholds in place
- Opportunity to 'brand' the building



WREADVISORS

WRE Advisors Inc.

Scott Willis
Broker of Record
416-519-3282
scott@wreadvisors.ca

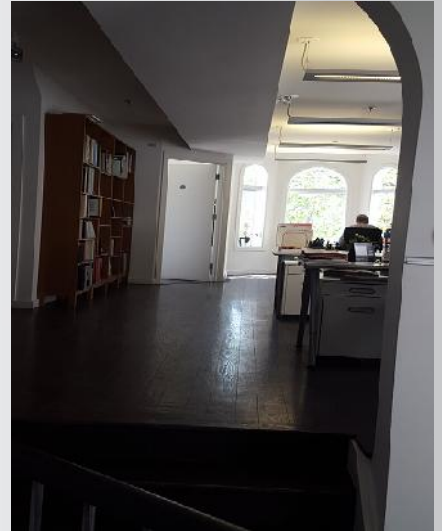
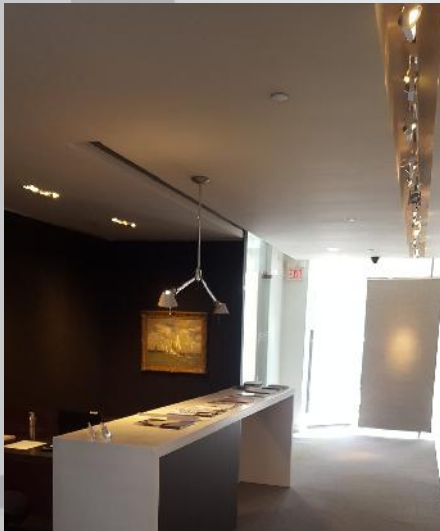
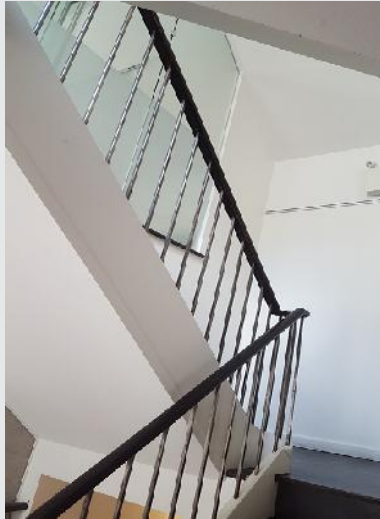


DWSV ReMax Ultimate Realty Inc.

Stan Vyriotes
Salesperson
416-738-5908
stan@dwsv.ca

FOR SUB-LEASE

20 Hazelton Avenue



WREADVISORS
WRE Advisors Inc.

Scott Willis
Broker of Record
416-519-3282
scott@wreadvisors.ca



DWSV ReMax Ultimate Realty Inc.

Stan Vyriotes
Salesperson
416-738-5908
stan@dsv.ca